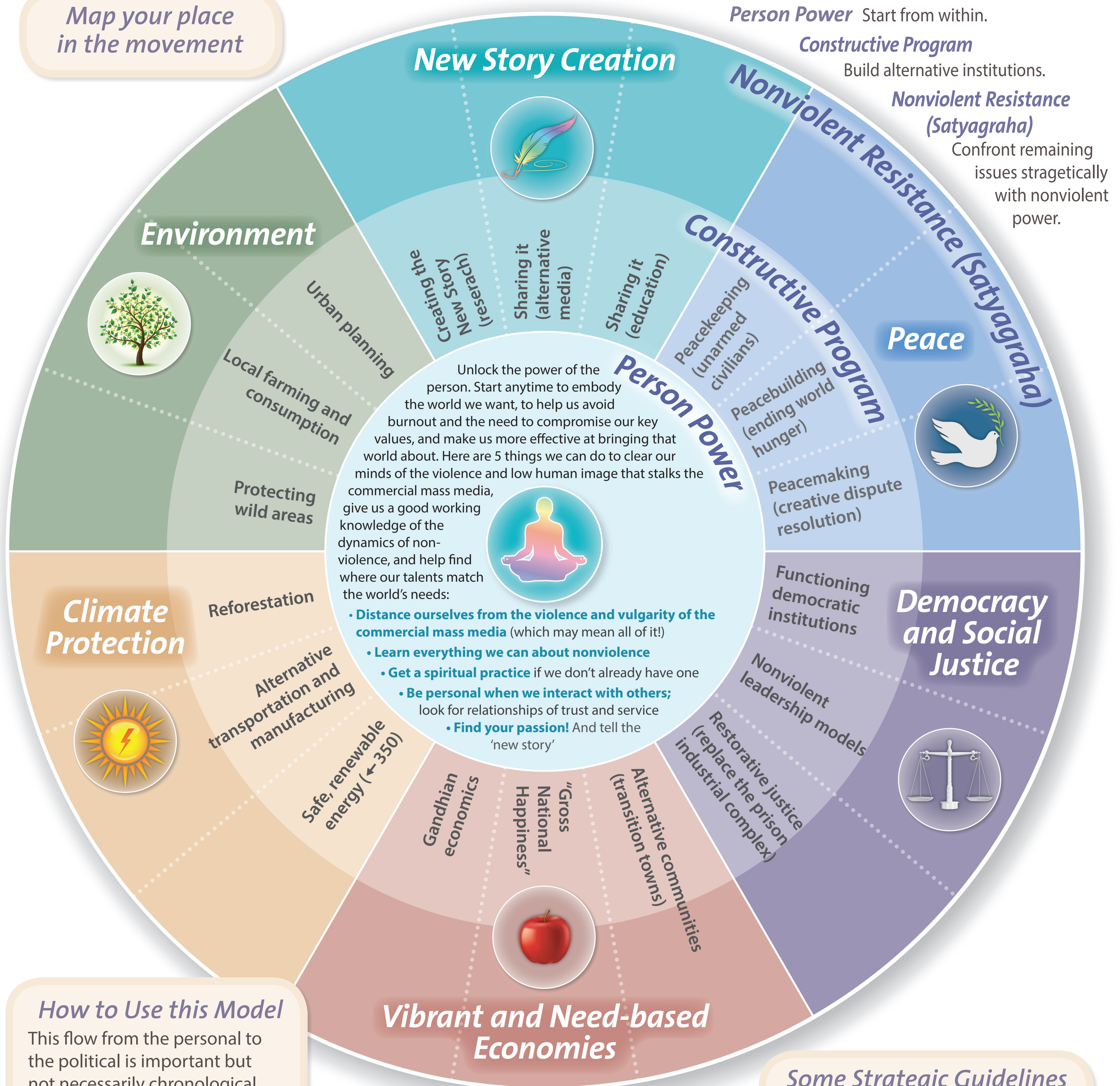


Roadmap

Unity, Strategy, and Nonviolent Power for an unstoppable movement

Map your place in the movement



Person Power Start from within.

Constructive Program

Build alternative institutions.

Nonviolent Resistance (Satyagraha)

Confront remaining issues strategically with nonviolent power.

Peace

Democracy and Social Justice

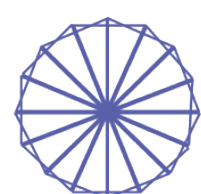
How to Use this Model

This flow from the personal to the political is important but not necessarily chronological.

- Locate your project(s) on the map; sense your solidarity with everyone in this work
- Never neglect your own development
- Think of constructive alternatives first and then:
- Address all conflicts through creative nonviolence.

Some Strategic Guidelines

- Practice nonviolence in deed, word, and as far as possible even thought.
- Be constructive wherever possible, obstructive when necessary
- Focus on "keystone" issues that will really leverage change
- Don't rely too much on symbols: be concrete wherever possible (the Salt March was about real salt!)



METTA CENTER
for NONVIOLENCE

Helping people practice nonviolence safely and effectively, and working toward a nonviolent culture.

www.mettacenter.org